



2015 ANNUAL REPORT

 Junior
Achievement®
of South Dakota

Why
J A ?





JA Purpose:

To inspire and prepare young people to succeed in a global economy.

JA ensures students have the knowledge and skills to succeed.

JA empowers students to achieve their dreams.

JA gives students hope for a better future.

JA helps prepare the future leaders of South Dakota.



36%

of Americans say that they have at some point in their lives felt their financial situation was out of control.

JumpStart Coalition for Financial Literacy

49%

of all US employers recognize that talent shortages impact their ability to serve clients and customers.

Manpower Group Talent Shortage Survey

91%

of Millennials want greater access to entrepreneurial education programs.

Marion Ewing Kauffman Foundation

Dennis Aanenson
A&B Business Solutions

Todd Bernhard
Delta Trust Company, Inc.

Victoria Blatchford
Wells Fargo Bank, N.A.

Jim Borszich
Greater Huron Development Corporation

Rod Carlson
Active Generations

Mike Derby
Canyon Lake Resort

Dana Dykhouse
First PREMIER Bank

Rod Fouberg
Dacotah Bank

Dr. Mark Froke
Vermillion School District

Darren Hefty
Hefty Seed Company

Steve Kirby
Bluestem Capital Company

Paul Knecht
SD Dental Association

Judith Meierhenry

Dr. Rick Melmer
Leadership South Dakota

Dr. Tim Mitchell
Rapid City School District

John Porter
Avera Health

Dr. Kay Schallenkamp

James Siemens
Celebrate Church

Clark Sinclair
Montgomery's Furniture

Joel Vockrodt
Office Peeps, Inc.

JA STATE BOARD OF DIRECTORS



Brian Sandvig



Jacquelyn Johnson



Bob Thimjon



Dean Buckneberg

CHAIR: Brian Sandvig, Valley Queen Cheese Factory, Inc.

VICE CHAIR: Jacquelyn Johnson, Dice Financial Services Group

SECRETARY: Bob Thimjon, The Ramkota Companies, Inc.

TREASURER: Dean Buckneberg, Eide Bailly, LLP



Dennis Aanenson



Todd Bernhard



Victoria Blatchford



Jim Borszich



Rod Carlson



Mike Derby



Dana Dykhouse



Rod Fouberg



Dr. Mark Froke



Darren Hefty



Steve Kirby



Paul Knecht



Judith Meierhenry



Dr. Rick Melmer



Dr. Tim Mitchell



John Porter



Dr. Kay Schallenkamp



James Siemens



Clark Sinclair



Joel Vockrodt

To Our Valued INVESTORS & FRIENDS

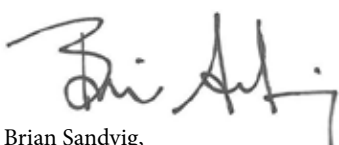
Because of your support,

Junior Achievement of South Dakota reached a milestone during the 2014-15 school year – impacting more than 50,000 South Dakota students! Thank you for funding the programs, giving your time as a classroom volunteer, or providing leadership on one of our area boards. Together, we are Empowering the Future.

Junior Achievement has the unique opportunity to work with students during the school day, as our programs match curriculum standards. But beyond the curriculum match, the volunteers encourage the students to dream big. The JA experience helps students connect their skills and interests to potential careers, and the activities share avenues students can take to make their dream job a reality.

For many students, the topics of financial literacy, work readiness, and entrepreneurship are not discussed at home. Oftentimes, the JA experience is the first time our students are exposed to these topics. Because our programs begin with kindergarten and continue through high school, we can provide this education to our students multiple times during their K-12 education. This is an exciting time to be involved with Junior Achievement. Many of our programs are being redeveloped to include more technology. We feel this is a great step toward remaining relevant and providing resources and experiences our students will benefit from and appreciate.

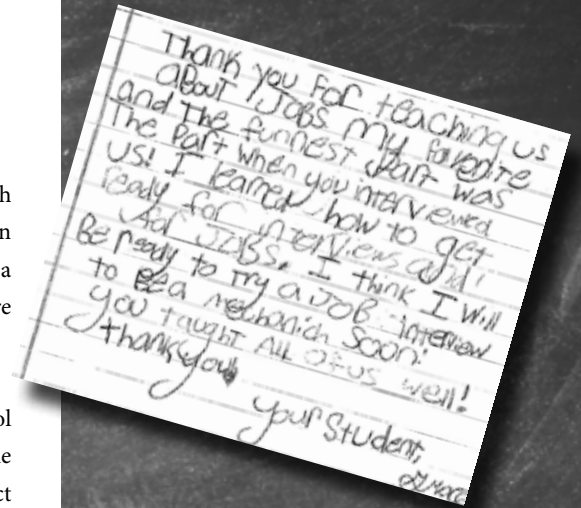
We are grateful for your continued support of our programs and our students. We are in the business of encouraging students to consider new possibilities, and we couldn't do it without you. We have big goals for the upcoming year, and due to partners like you, we believe they can be achieved. Now more than ever, our students need to have relevant financial literacy, work-readiness and entrepreneurship skills to ensure our state continues to be a great place to live and work.

Brian Sandvig,
State Board Chair
JA of South Dakota




Kayla Eitreim,
President
JA of South Dakota



Junior Achievement of South Dakota would like to recognize Avera and the Ramkota Companies, Inc. for their generous in-kind donations to prepare and print this annual report.

50,013 Students



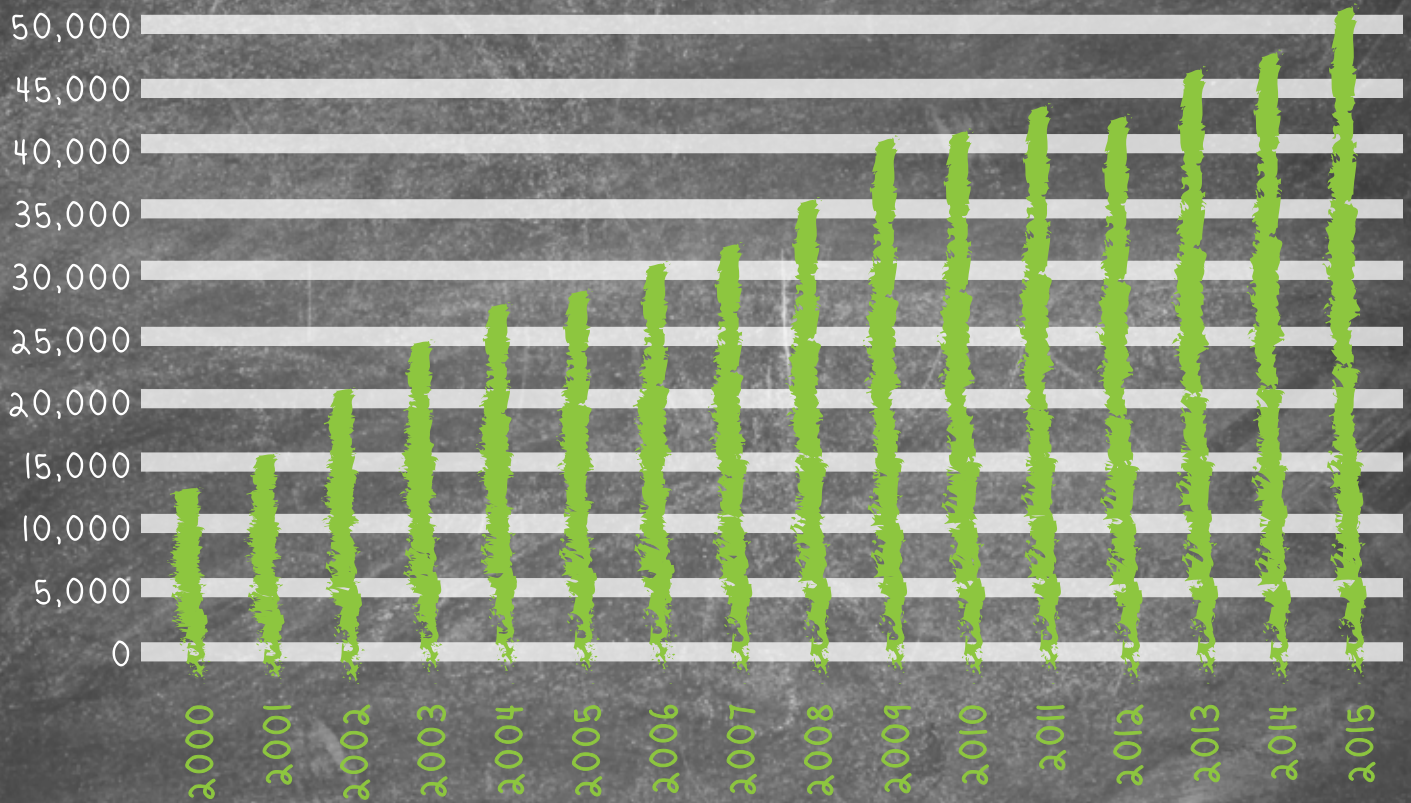
72.88%

annual volunteer retention rate in South Dakota, the highest rating among Junior Achievement offices in the USA. Nationally, the average JA volunteer retention rate is 30.8%.

32.91%

of South Dakota students receive Junior Achievement programs. Nationally, South Dakota ranks fifth out of 115 JA offices for student market share. The JA national average market share is 8.88%.

Students Empowered



This chart reflects the number of students who have been impacted by Junior Achievement of SD since 2000.





Pillars of success

JA programs center around

Three main pillars:

- Entrepreneurship
- Financial Literacy
- Career and Work Readiness

2,176

Volunteers visited
classrooms in
2014-15 school
year!

KEY

JA Pillars signify a program's primary focus, however; each JA program is developed to include all three pillars.

Minimal
Moderate
High

ELEMENTARY

	Entrepreneurship	Financial Literacy	Career & Work Readiness
JA Ourselves*	Moderate	High	Moderate
JA Our Families*	High	Moderate	Moderate
JA Our Community*	Minimal	Moderate	High
JA Our City*	Moderate	High	Moderate
JA Our Region*	High	Moderate	Moderate
JA Our Nation*	Moderate	Minimal	High
JA More than Money*	High	High	Moderate

MIDDLE SCHOOL

	Entrepreneurship	Financial Literacy	Career & Work Readiness
JA Economics for Success*	Minimal	High	High
JA Global Marketplace*	Moderate	Moderate	Moderate
JA It's My Future*	Moderate	Minimal	High
JA It's My Business!*	High	Minimal	Moderate

HIGH SCHOOL

	Entrepreneurship	Financial Literacy	Career & Work Readiness
JA Be Entrepreneurial*	High	Minimal	Moderate
JA Career Success*	Moderate	Minimal	High
JA Company Program*	High	Moderate	High
JA Exploring Economics*	Moderate	Moderate	Moderate
JA Personal Finance*	Minimal	High	Moderate
JA Titan*	Moderate	Minimal	High

JA EXCELLING THROUGH ETHICS

Over 300 executive-level volunteers visited classrooms to present the JA Excelling through Ethics program during the 2014-15 school year. The initiative behind the program is to teach students what ethics means, to show why ethics is important, and to help youth build an ethical foundation. The program was implemented in 27 communities across the state and impacted over 7,700 South Dakota middle and high school students.



JA VOLUNTEERS

come from all walks of life, representing a variety of interests and skills. JA encourages volunteers to teach a program that aligns with their areas of interest.

Entrepreneurship:

- Business Plans
- Small Businesses
- Innovation/Creativity
- Marketing
- Problem Solving

Financial Literacy:

- Budgets
- Insurance
- Investing
- Credit
- Savings

Career and Work Readiness:

- Interviewing
- Branding
- Soft Skills
- Job Searching
- Conflict Resolution



Impact areas

**Youth
Development**

JA

**Economic
Development**

**Education
Development**

Thank you for being our
Jr Achievement teacher. I liked it
when we learned about jobs.
My favorite lesson was needs and wants.
From,
Keira
need  want 

Why VOLUNTEER?

Volunteers play a key role in bringing Junior Achievement to life. By sharing their personal and professional experiences and skills with students, they help them make the connection between what students are learning in school and what they will need to succeed in work and life.

Junior Achievement makes volunteering fulfilling and offers flexible scheduling options. Our curriculum provides everything needed to make participation in JA interactive and engaging for students.

In as little as an hour a week, you can make a difference in the lives of young people. Your Junior Achievement experience will leave you feeling proud, energized, and hopeful about a better future for our young people.

Thank You!

Over 2,100 volunteers made a difference by teaching JA programs in classrooms this year. To see the list of volunteers or to become a volunteer this school year, visit www.jasd.org.



BENEFITS TO STUDENTS:

- Shows importance of staying in school.
- Showcases community role models.
- Encourages career exploration.
- Stimulates interest in business and education.

VOLUNTEERS COMMIT TO:

- Attend a training session.
- Teach five to thirteen one-hour sessions with pre-developed JA materials and hands-on activities.
- Encourage student success by sharing real-world experiences.



Special



Chamberlain



Dell Rapids



Pierre / Ft. Pierre



Rapid City



Sioux Falls

JA GOLF EVENTS

Over \$164,000 was raised during the golf events held in the following communities: Chamberlain, Dell Rapids, Pierre/Ft. Pierre, Rapid City, and Sioux Falls.

CHAMBERLAIN

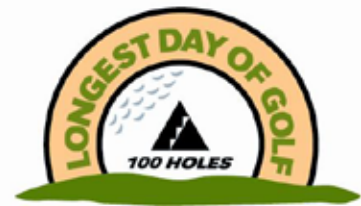
64 golfers raised more than \$3,500

DELL RAPIDS

48 golfers raised more than \$3,800

PIERRE/FT. PIERRE

52 golfers raised more than \$5,000



Junior Achievement®

100 HOLE CHALLENGE

\$2,500 Per Golfer

RAPID CITY

Seven golfers raised more than \$28,000

SIOUX FALLS

41 golfers raised more than \$124,000

Junior Achievement would like to thank the in-kind sponsors who made the 2014-15 special events a success. For a complete listing of Junior Achievement in-kind sponsors, please visit www.jasd.org.

Events



Nearly 2,500 bowlers participated and raised money for JA programming in their communities. Over \$200,000 was raised during the annual Bowl-a-Thon by the following South Dakota JA Area Boards:

- Aberdeen
- Brookings
- Canton
- Huron
- Mitchell
- Northern Hills
- Pierre/Ft. Pierre
- Sioux Falls
- Watertown
- West Central
- Yankton



ABERDEEN



BROOKINGS



CANTON



HURON



MITCHELL



NORTHERN HILLS



PIERRE/FT. PIERRE



SIOUX FALLS



WATERTOWN



WEST CENTRAL



YANKTON



The JA Aberdeen board held its inaugural Bacon Run to raise funds for JA programs in Aberdeen and Warner. Participants ran in a 5K race, and were treated to all the bacon they could eat after running! The event raised over \$2,600 (gross).

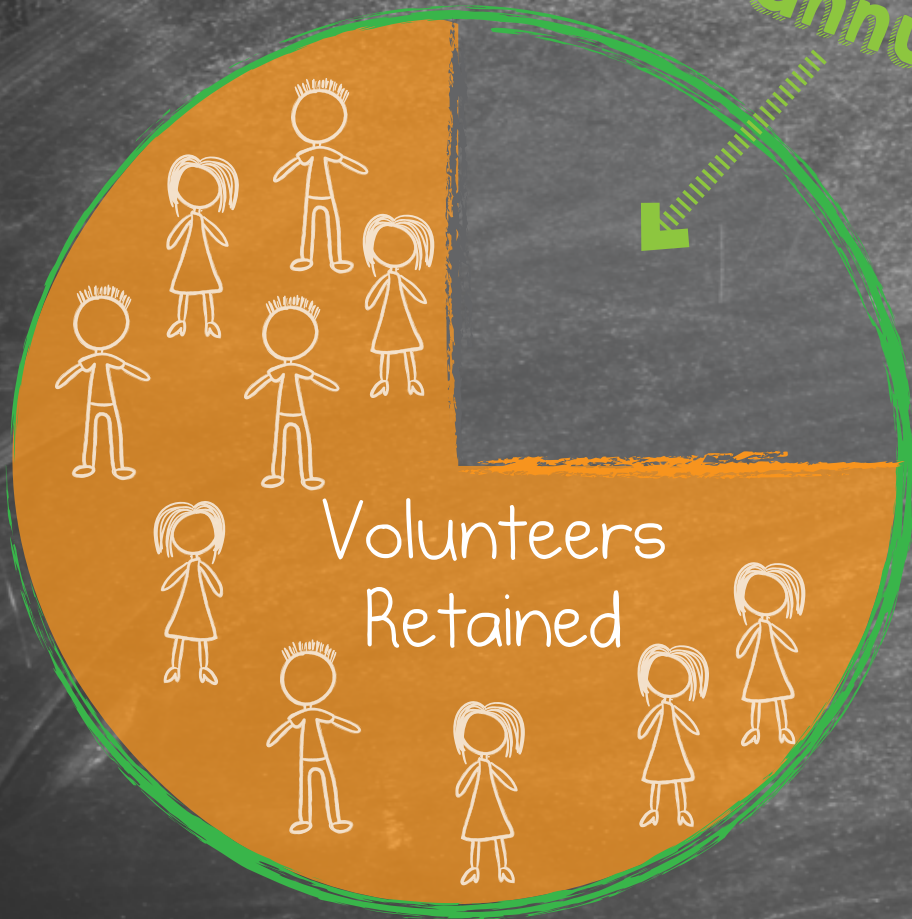


Employees of several companies wore jeans to work, in exchange for a donation to Junior Achievement. Each participating company determined the cost and details of wearing jeans (e.g., \$10 per person), with all proceeds going to Junior Achievement of South Dakota programs.

Ways To Go

Volunteer!

400+ NEW
volunteers
needed
annually



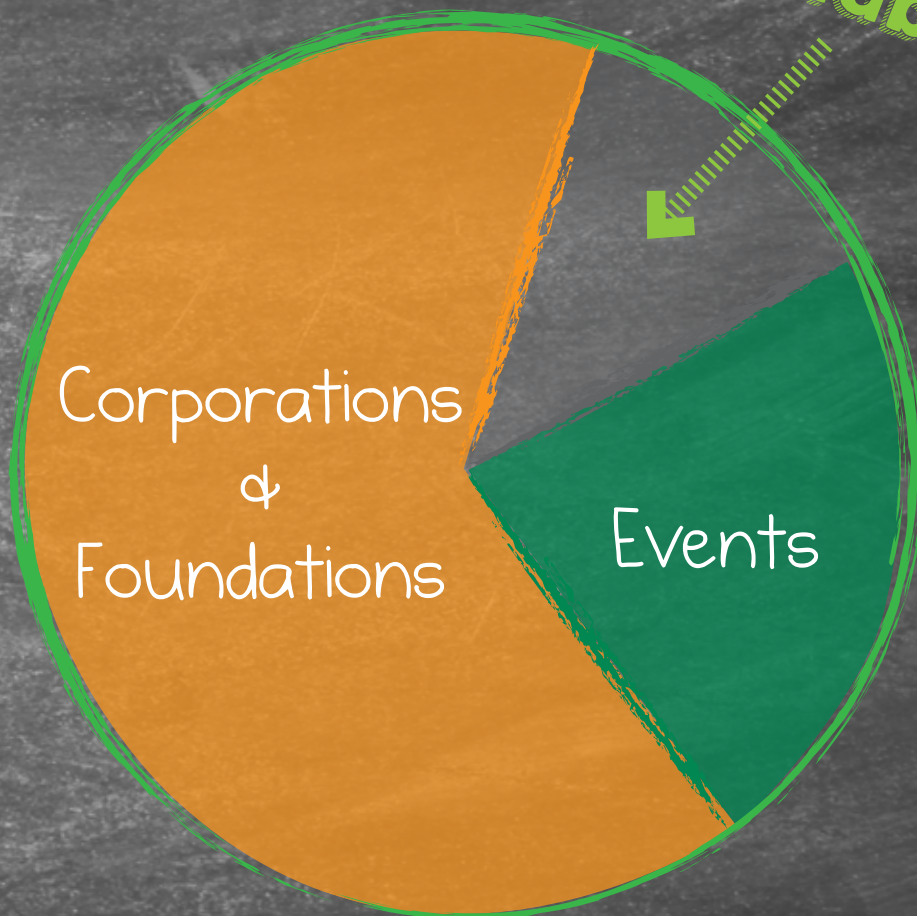
BENEFITS TO BUSINESS:

- Educates future employees
- Sharpens employee verbal communication and presentation skills
- Refines “people skills”: caring, listening, negotiating
- Contributes to a positive corporate image

et Involved

Invest!

NEW funding
needed annually
for growth &
sustainability



BENEFITS TO BUSINESS:

- Impact South Dakota's future business leaders
- Sponsorship/Marketing opportunities are available
- Be a part of impacting more than 50,000 students

Awards



Thank you for being our
Achievement teacher. I liked it
when we learned about money!
Joe



JA USA GOLD LEADERSHIP AWARD

Al Kurtenbach, co-founder of Daktronics, Inc., was recognized by JA USA with a 2015 Gold Leadership Award, JA's highest volunteer leadership award. Al was selected due to his outstanding service and support to Junior Achievement of South Dakota. Al has been involved with Junior Achievement since 1980, and during that time, has served on the Brookings and State Boards for more than 10 years. Al was presented with his Gold Leadership Award in front of a sell-out crowd during halftime of the SDSU Women's Summit League Tournament game in Sioux Falls on March 7, 2015.



JA USA AWARDS

SILVER

Brian Sandvig, Valley Queen Cheese Factory, Inc., Milbank & State Board



Brian Sandvig



Bill Allen



Michelle Bruno

BRONZE

Bill Allen, Showplace Wood Products, Sioux Falls Board

Michelle Bruno, Synchrony Financial, Rapid City Board

James Gordon, Reliabank, West Central Board

Julie Gross, Lake Area Improvement Corporation, Madison Board

Darrel Kaiser, Frontier Motors, Winner Board

Mark Powell, Midcontinent Communications, Sioux Falls Board

Taya Runyan, SD Department of Agriculture, Pierre Board

Lisa Snedeker, Dakotaland Federal Credit Union, Huron Board

Trisha Strohfus, Daktronics, Inc., Brookings Board



James Gordon



Julie Gross



Darrel Kaiser



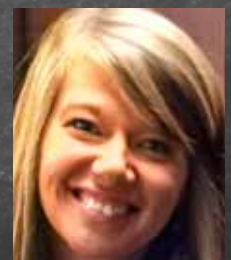
Mark Powell



Taya Runyan



Lisa Snedeker



Trisha Strohfus

JA AREA BOARDS

* - New in 2015

ABERDEEN

Chair: Bob Compton, Dacotah Bank
Chad Bent, State Farm Insurance
Jennifer Black, 3M *
Holly Engelhart, Eide Bailly, LLP
Evan Fonder, RDO Equipment
Teresa Garafalo, Presentation College
Taylor Gosch, RDO Equipment *
Donna Hurley, Avera St. Luke's
Lee Keller, Pierson Ford
Djamel Khali, South Dakota Wheat Growers *
Jolene Malsam, CompQuest Technology, LLC *
Pamela Martyn, Dacotah Bank
Lynne Nacke, Northern State University
Jean Peterson, South Dakota Wheat Growers
Bob Pitz, Aberdeen School District
Jessica Rehder, Aberdeen Area Chamber of
Commerce
Durrant Schmidt, Dacotah Bank *
Kevin Simons, 3M
Guy Trenhaile, HealthCare Plus Federal Credit
Union

BRANDON

Chair: Mary Entinger, Citi
Sarah Askdal, Wells Fargo Home Mortgage *
Kevin Callies
Melanie Mills, Citi *
Darcey Otter-Bellack, Wells Fargo Bank, N.A.
David Pappone, Brandon Valley School District
Jenne VanWesten, U.S. Bank

BROOKINGS

Chair: Dennis Miller, Capital Services
Barbara Anderson, Brookings Health System
Greg Fargen, BankStar Financial
Nick Fickbohm, Old Market *
Les Howard, Legacy Financial Partners
Andrew Jallo, Dacotah Bank *
Robyn Jensen, Legacy Financial Partners *
Bob Jostad, Harms Oil
Jena Konkol, Den-Wil Investments, Inc.
Gary Mork, Brookings School District
Sarah Perry, Falcon Plastics, Inc.
Trisha Strohfus, Daktronics, Inc.
Erin Tetzlaff
Paul Traynor, 3M
Rebecca Trygstad, 139th Brigade Support
Battalion *
Brad Wermers, Banner Associates Inc.
Kari Westlund, Best Choice Real Estate

CANTON

Chair: Paul Gerhart, Sanford Canton-
Inwood Medical Center
Val Anderson, Farmers State Bank
Leon Eich, Security Savings Bank

Kari Elrod, Kari's Kreations
Shawn Sandnes, First Bank & Trust
Angie Wiersma, First Bank & Trust *

CENTERVILLE

Chair: Shawn Johnson, Wells Fargo
Education Financial Services
Chad Conway, Centerville School District
Darren Hefty, Hefty Seed Company
Kendra Hotchkiss, Centerville School District
Brad Preheim, The Thomson Agency, Inc.
Jacquelynn Skotvold, Centerville Economic
Development Corporation

CHAMBERLAIN

Chair: Ron Madison, Cedar Shore Resort
Rocky Almond, Chamberlain Elementary
School *
Joel Bergeson
Brian George, St. Joseph's Indian School
Deah Killion, Sanford Chamberlain
Doug Knust, Harry K Chevrolet
Chantell Kriel, Great Western Bank
Sheena Larsen, Great Western Bank
Lori McQuirk, Chamberlain Elementary
Bradee Pazour, Ameriprise Financial
Kelli Potter, KPI Insurance
Connie Priebe, First Dakota National Bank
Jeff Tveit, Thrivent Financial

DELL RAPIDS

Chair: Patrick Mullaney, Citi
Ricca Bent, First PREMIER Investment Services
Jody Heinemann, Wells Fargo Bank, N.A.
Karen Hilmoe, Wells Fargo Bank, N.A.
Kim Kludt, Dell Rapids School District
Bruce Mogen, Home Federal Bank
Tylene Schwebach, Wells Fargo Bank, N.A.
Tracy Welbig, Wells Fargo Bank, N.A.

HURON

Chair: Lisa Snedeker, Dakotaland Federal
Credit Union
Michelle Chenoweth, Montgomery Real Estate *
Tom Glanzer, NorthWestern Energy
Caitlin Johnson, Bank of the West *
Tasha Lee, American Bank & Trust Insurance *
Becky Long, South Dakota Farmers Union
Denis Mahowald, BW Insurance
Rodney Mittlestadt, Huron High School *
Terry Nebelsick, Huron School District (liaison)
DK Osier, Performance Radio
Michael Ready, Dakota Provisions
Kelly Rotert, Huron School District
Bryan Smith, Dakotaland Federal Credit Union
Laura Willemssen, Huron School District

MADISON

Chair: Julie Gross, Lake Area
Improvement Corporation
Sue Bergheim, KJAM Radio
Janel Guse, Madison Elementary
Ann Hyland, Heartland Consumers Power
District
Stacy Krusemark, Dakota State University
Bob Sahr, East River Electric Power Cooperative
Adam Shaw, Madison High School
Brenda Thompson, EXIT Realty Advantage
Rob Thuringer, Peterson Farms Seed
Janet VanRosendale, Falcon Plastics, Inc.

MILBANK

Chair: Brian Sandvig, Valley Queen Cheese
Factory, Inc.
Brenda Anderson, St. Lawrence School *
Lance Bien, Bien Pharmacy
Bobbie Bohlen, Grant County Economic
Development Corporation
Kris Evje, Milbank Middle School *
Michelle Giesen, Valley Queen Cheese Factory, Inc. *
Tim Graf, Milbank School District
Delvin Hackwith, Edward Jones *
Dave Hepper, First Bank & Trust
Kevin Kouba, Otter Trail Power
Tim Lease, Milbank School District
Dennis Mears, Thrivent Financial *
Steve Nomeland, Great Western Bank *
Bob Paulson, Gesswein Motors
Mark Reedstrom, Reedstrom Law Offices
Tom Schuneman, Schuneman Equipment
Jan Scriver, State Farm Insurance
Dan Snaza, Milbank High School
Boyd VanVooren, City of Milbank *
Steve Wenzl, First Bank & Trust

MITCHELL

Chair: Jeral Gross, The Title Company
Steve Clark, GF Advertising
Will Flett, Avera Queen of Peace
Lacey Hayes, Innovative Systems, Inc. *
Jacquelyn Johnson, Dice Financial Services Group
Jen Johnston, Mitchell Convention and Visitors
Bureau
John Koons, Q107 *
Dustin Ludens, Morgan and Theeler Law Firm
Karmen McCain, Café Teresa
Kathryn Morrison, Dakota Wesleyan University *
Terra Plamp, ELO Prof. LLC
Rich Platt, BankWest
Stephanie Reasy, Avera Queen of Peace *
Becky Roth, L. B. Williams Elementary
Robert Schelske, First Dakota National Bank
Rebecca Zabel, Mitchell Chamber of Commerce

NORTHERN HILLS

Chair: Dan Leikvold, Lead-Deadwood School District
Steve Biehl, Wells Fargo Bank, N.A.
Molly Blair, Walgreens
Jodi Garcia, State Farm Insurance
Julie Gardner, First Interstate Bank
T.J. Gusso, First Interstate Bank
Melissa Kraft, Wells Fargo Bank, N.A.
Dave Peters, Spearfish School District
Ann Nonast, Meade School District
Mathew Raba, Belle Fourche School District
Valeri Reed, First Interstate Bank
Brice Rock, Pioneer Bank & Trust
Gayle Roth, First Interstate Bank
Linda Sperlin, First Western Insurance
Hollie Stalder, Belle Fourche Economic Development
Mindy Zacher, Belle Butte Title Company

PIERRE/FT. PIERRE

Chair: Taya Runyan, South Dakota Department of Agriculture
Janice Bartels, Burner and Associates, Inc.
Amanda Bacon, Avera Medical Group Pierre *
Bill Blauert, Wells Fargo Bank, N.A.
Matt Brakke, Brakke Financial Services *
Shalee Campbell, Affections Floral *
Scott Carbonneau, BankWest
Rob Coverdale, T.F. Riggs High School
Clay Cudmore, South Dakota Community Foundation
Jenne Dempewolf, BankWest *
Jason Dodson, Leisure Palace *
Melisa Forest, Central South Dakota Teen Court
Scott Isburg, Isburg Hofmeister Funeral Chapel
Dan Rice, Clausen & Rice, LLP
Sarah Snyder, Avera Medical Group Pierre
Tina Van Camp, First Dakota National Bank
Emily Zarecky, Midwest Construction

RAPID CITY

Co-Chair: Kelly Buntrock, First Interstate Bank
Co-Chair: Sandi Mickley, Pete Lien & Sons
Shannon Brinker, Rapid City Journal
Michelle Bruno, Synchrony Financial
Cary Davis, General Beadle Elementary
Mike Derby, Canyon Lake Resort
Kent Hagg, Whiting, Hagg, Hagg, Dorsey and Hagg
Sarah Hermsen, Rapid City Regional Hospital
Ron Hill
Andrew Knutson, Gunderson, Palmer, Nelson & Ashmore, LLP
Dr. Timothy Mitchell, Rapid City School District
Hillary Morton, Main Street Market
Jared Nooney, U.S. Bank
Michelle Pahl, Farm Bureau Financial Services
Don Policky, Big D Oil
Sandra Schwan, Great Western Bank
Mutch Usera, Black Hills Power

ST. LOUIS

Chair: Tom Van Wyhe
Dennis Aanenson, A&B Business Solutions
Bill Albrecht, Argus Leader Media *
Bill Allen, Showplace Wood Products
Amange Aware, Wells Fargo Bank, N.A.
Dave Bangasser, Dacotah Bank
Stephen Bianchi, Home Federal Bank
Tom Bosch, Avera McKennan Hospital and University Health Center
Dean Buckneberg, Eide Bailly, LLP
Rod Carlson, Active Generations
Bernie DeWald, McKinneyOlson Insurance
Gary Gaspar, Interstate Office Products, Inc.
Joe Gaspar, Tri-State Wholesale Flooring
Steve Herman, Coffee News of Sioux Falls *
TJ Hora, First PREMIER Bank
Michael Kedik, Lipetzky's Irrigation and Landscape
Randy Knecht, Journey Group
Nick Kortan, SDN Communications
Dr. Don Kosiak, Avera Health
Eric Krouse, U.S. Bank
Ruth Krystopolski, Sanford Health
Dr. Kevin Lein, Harrisburg School District
Liz Lloyd, Lloyd Companies
Lee Magnuson, Lindquist & Venum PLLP
Joan Mahoney, O'Gorman High School
Mike Milstead, Minnehaha County Sheriff
Julie Nelson, Home Federal Bank
Kristine O'Connell, Woods, Fuller, Shultz & Smith, PC
Mark Powell, Midcontinent Communications
Dr. Laura Raeder, Sioux Falls School District
Tim Reuer, Sammons Financial Group
Debra Riedel, Hy-Vee Food Stores
Char Roth, J&L Harley-Davidson *
Anthony Schmidt, Raven Industries
Lynette Stearns, Capital One
Ken Stork, Citi
Paul Ten Haken, Click Rain
Pam Tiefenthaler, Sioux Falls Christian Schools
Garrett Wilson, ReliaMax Lending Services, Inc.

TEA

Chair: John Lawler, McGreevy & Associates
Jodi Beehler, Sammons Financial Group
Stephanie Fritz, Citi
Jeremy Keizer, Reliabank
Melissa Schmiedt, Midcontinent Communications
Randy Shaull, Sammons Financial Group
Josh Weber, Sammons Financial Group *

VERMILLION

Chair: Tasha Anderson, HorsePower
Shannon Fairholm, Vermillion School Board
Dr. Mark Froke, Vermillion School District
Joe Hoose, SESDAC
Jamie Neitzke, Vermillion Federal Credit Union
Rachel Olson, Sanford Health *
Scott Pohlson, University of South Dakota *
Paul Preister, Bank of the West
Ric Rasmussen
Lynne Roach, University of South Dakota

Layne Stewart, Clay County Emergency Management
Craig Thompson, Thompson Law
Sarah Wolforth, Jolley Elementary School

WATERTOWN

Chair: Jason Hutt, Hy-Vee Food Store
Carmen Bakken, Edward Jones
Liz Christianson, Boys & Girls Club of Watertown
Tammy Davis, Wurth Electronics Midcom Inc.
Tammy DeLange
Gregg DeSpiegler, Roosevelt Elementary *
Mark Dunn, First PREMIER Bank
Dave Fuchs, Hoftiezer Real Estate
Kip Hansen, Dacotah Bank
Julie Hibbert, TEREX Utilities
Chad Johnson, Watertown Middle School
Brenda McKee, Home Federal Bank
Tim Oviatt, Public Opinion
Dan Roberts, Walmart
Heidi Schooley, National American University
Darrell Stacey, Watertown School District
Trav Uthe, Trav's Outfitter *
Mindy Wirkus, Ledgers, Inc. *
Toby Wishard, Codington County Sheriff's Department

WEST CENTRAL

Co-Chair: Vonnie Barnett, CAPITAL Card Services
Co-Chair: Scott Nelson, KTTW Fox 7
Matt Alley, West Central Elementary - Humboldt
Blaire Bathke, Home Federal Bank *
Emily Berg, First Manufacturing
Shala Eisenbeisz, PREMIER Bankcard *
James Gordon, Reliabank
Jennifer Munger, West Central Elementary - Hartford

WINNER

Chair: Darrel Kaiser, Frontier Motors
Lynelle Anderson, Winner Regional Healthcare Center
Bruce Carrier, Winner School District
Lyndon Hooper, Wells Fargo Bank, N.A.
Chuck Keiser, First Fidelity Bank/Fidelity Agency
Candi Sachtjen, Leyden and Associates/Ameriprise Financial

YANKTON

Chair: Jamie Schaefer, Avera Sacred Heart
Kevin DeJong, Home Federal Bank *
Terra Fisher, Terra Fisher Consulting, LLC
Susie Frick, First Dakota National Bank
Tom Hausmann, S.M.A.R.T. Training
William Henning, Karls Inc. *
Stacy Huber, Edward Jones *
Steve Pietila, First Dakota National Bank
Kathy Quinlivan, Avera Sacred Heart
RJ Rieger, First Dakota National Bank *
Beth Roesler
Deb Specht, Vision Real Estate
Justin Wagner, First National Bank

JA INVESTORS

STATEWIDE EXPANSION

Achievement Foundation
Credit Union Association of the Dakotas
Delta Air Lines
Dana Dykhouse
Kayla and Andrew Eitreim
Kristie and Tim Fiegen
Resa Fincher
Dr. Mark Froke
Curt Hage
Deb and Monte Hanson
Deborah J. Hoeke
Home Federal Bank
Al Kurtenbach
MetLife Foundation
Network for Good
John Porter
Sanford Health
Sheldon F. Reese Foundation
Sioux Falls Area Community Foundation
South Dakota Automobile Dealers Association
South Dakota Bankers Association
South Dakota Retailers Association
Janice Sutera
UPS Foundation

ABERDEEN & WARNER

3M Company
3Mgives Foundation - Volunteer Match
A&B Business Solutions
Aberdeen American News
Aberdeen Development Corporation
Aberdeen Federal Credit Union
Aberdeen Optimist Club
Aberdeen Sertoma Club, Inc.
Avera
Myranda Becking
Centennial Homes, Inc.
C-Express
Bob Compton
Culver's
Dacotah Bank
Dakota Broadcasting
Dakota Financial Services
Mary Davis
Double D Body Shop
Eide Bailly, LLP
Holly Engelhart
Chad Evans
Kristen Fauth
First State Bank of Warner
Evan Fonder
Robert J. Fouberg
Rod and Glenna Fouberg
Teresa Garofalo
Glacial Lakes Energy, LLC
Great Western Bank

Bob Gunderson
HealthCare Plus Federal Credit Union
Home Federal Bank
Hub Music and Vending Co.
Donna Hurley
Investment Centers of America
JDH Construction
Nancy Kappes
Ken's SuperFair Foods
Kiwanis Club - Aberdeen
Land O' Lakes Foundation
LB Insurance
Lien Transportation
JoEllen Lindner
Pam Martyn
Max and Erma's
Midcontinent Communications
Midstates Printing, Inc.
Northern State University
Northern Valley Communications
NorthWestern Energy
Jean Peterson
Plains Commerce Bank
Presentation College
Presentation Sisters, PBVM
Primrose Retirement Communities, LLC
Quest Construction, LLC
RDO Equipment Co.
Rhodes Anderson Insurance
Carlyle E. Richards, Attorney
Runnings Fleet and Farm
Sanford Health
Grant Seaman
Shopko Foundation
South Dakota Wheat Growers
Angela Steinbach
Steven Lust Automotive
Taylor Insurance Agency
Thrivent Financial for Lutherans
Guy Trenhaile
U.S. Bank
Kacy Walker
Walmart
Warner/Stratford Lions Club
Wells Fargo Bank, N.A.
Wooden Mallet

BRANDON VALLEY

Alliance Communication Cooperative, Inc.
Brandon Bookkeeping Services
Brandon Chiropractic
Brandon Community Foundation
Brandon Elementary PTA
Brandon Health Mart Pharmacy
Brandon Lumber
Brandon Valley Middle School PTSO
Brandon Valley Optimist Club
Building Blocks Childcare



Kevin Callies
CHS Eastern Farmers
D & M Construction
Daktronics, Inc.
Mary Entinger
Fred Assam Elementary PTA
Fulda Electric
HJN Team Real Estate
Home Federal Bank
Jay Egge Automatic Service, Inc.
Dr. Matt Krivarchka
Lewis Drug Stores
Love That Look
Marv's Sanitary Service, Inc.
Midwest Railcar Repair
Minnco Homes, Inc.
Robert Bennis PTA
Roger Hunt, Attorney
Sanford Health
Sioux Falls Area Community Foundation
Sioux Valley Energy
Spartan ERV
Sunshine Foods/Tony's Catering
Today's Family Dentistry
U.S. Bank Foundation - Employee Matching Gift Program
Valley Springs Body Shop
Valley Springs Elementary PTA
Jenne VanWesten

BROOKINGS & VOLGA

3M Company
Adee Honey Farms
Barbara Anderson
Arlington Chiropractic and Acupuncture
AvailAbility Employment Services & Staffing
Avera
B & B Auto, Inc.
BankStar Financial
Banner Associates, Inc.
Dan Beinhorn
Bel Brands USA
Jackie Bentzen
Victoria Blatchford
Bowes Construction

Brian J. Hildebrant CPA, PC
Steven J. Britzman
Brookings Equipment, Inc.
Brookings Lions Club
Mike Burgers
Burlage Peterson Realty & Auctioneers
Capital Services
CherryBerry
Clites Electric
Counterpart, Inc.
Courtesy Plumbing
Creative Printing
Dacotah Bank
Dakotah Gold
Dakotaland Federal Credit Union
Daktronics, Inc.
Edward Jones - Jim Winterboer
Ekern Plumbing Heating & Air Conditioning
Expanding Harmony Dance Studio
Falcon Plastics, Inc.
Greg Fargen
Fergen's Clothing & Shoes
First Bank & Trust
Fourteen Foods
GCC of America
George Dokken Post 2118 Veterans of Foreign Wars
Ann Getting
Darci Gordon
Gustafson Krogman & Associates
Hawley Insurance Services
Kristin Heismeyer
Helsper, McCarty, Mahlke & Kleinjan, P.C.
Hicks Enterprises
Michelle Hof
Home Federal Bank
Stacie Horst
Hungerford Chiropractic and Physical Therapy
Hy-Vee Food Store
Andrew Jallo
Craig Johnson
Bob Jostad
Jena Konkol
Al Kurtenbach
L. G. Everist, Inc.

Larson Manufacturing Company
 Jeff Lee
 Legacy Financial Partners
 Lewis Drug Stores
 Martin Oil
 MetaBank - Brookings
 Dr. David Meyer
 Midwest Glass
 Millborn Seeds, Inc.
 Dennis Miller
 Mills Construction, Inc.
 Mike Mogard
 Monsanto Seeds
 Jim Morgan
 Gary Mork
 Nagel's Bump & Paint
 Northway LLC
 NorthWestern Energy
 Sarah Perry
 Miranda Peterson
 Stephanie Reicks
 Richland State Bank
 Jeff Rief
 Royal Plastics, Inc.
 RTI, LLC
 Rude's Funeral Home
 Rykhus Financial Services
 Sanford Health
 Ryan Schiller
 Schuneman Equipment Company
 Kristen Seas
 Sioux Valley Alumni & Friends
 Foundation
 Sioux Valley Elementary PTO
 Sioux Valley Energy
 Slumberland
 South Dakota Soybean Processors
 Trisha Strohufus
 Taco John's
 Ron R. Tesch
 Tiny Tots Daycare
 Kate Treiber
 Valley Restaurant & Catering
 Vanderwal Trucking
 Wells Fargo Bank, N.A.
 Brad Wermers
 Kari Westlund
 WW Tire Service, Inc.
 Yorkshire Dental Clinic

CANTON

Canton Dental Clinic
 Canton Lions Club
 Canton Rotary Club
 CHS Eastern Farmers
 Leon Eich
 Farmers State Bank - Canton
 First Bank & Trust
 Paul Gerhart
 Deborah J. Hoeke
 Home Federal Bank
 Lewis Drug Stores
 Midcontinent Communications
 Sanford Health
 Security Savings Bank
 Sunshine Foods - Canton

CENTERVILLE

Centerville Chamber of Commerce
 Centerville Public Schools
 Centerville Rotary Club
 Fort Randall Telephone
 Darren Hefty
 Hefty Seed Company
 Sanford Health

CHAMBERLAIN

Cindy Adams
 Al's Oasis Inc.
 Cedar Shore Resort
 Chamberlain Lions Club
 Country Colleens
 Dr. L. L. Menning, Optometrist
 ELO Prof. LLC
 First Dakota National Bank
 Great Western Bank
 Harry K Chevrolet
 Kiwanis Club of Chamberlain
 KPI Insurance
 Sheena Larsen
 Lewis Drug Stores
 Ron Madison
 Orrion and Edith Barger Foundation
 Peterson Land & Auction
 Kelli Potter
 Connie Priebe
 Sanford Health
 Swenson Bros. Marine
 Thiel's Collision Center
 Thrivent Financial
 Jeff Tveit
 Wells Fargo Bank, N.A.
 Willrodt Motor Company

DELL RAPIDS

Ricca Bent
 BX Civil & Construction, Inc.
 County Fair Food Store
 Cubby's
 Deli of Dell Rapids
 Dells Auto
 Dells Farm & Tire
 Dells Forward Youth
 Dells Materials
 Dells Theatre
 Teri Eddy
 Jessica Evans
 Executive Recruiting Consultants, Inc.
 Jody Heinemann
 Karen Hilmoe
 Deborah J. Hoeke
 Home Federal Bank
 J & P Roofing
 Kahler Financial Services
 Kahler Funeral Home
 Kimberly Kludt
 KMWF & Associates, PC
 L. G. Everist, Inc.
 Lewis Drug Stores
 Microsoft Corporation
 Minnehaha Funeral Home
 Bruce Mogen
 Patrick Mullaney
 David O'Hara

Old 77 Bar & Grille
 Paw Spa by Kathy
 Pizza Ranch
 Sanford Health
 Tylene Schwebach
 Schwebach Insurance and Real Estate
 Sioux Valley Energy
 St. Mary's Booster Club
 T & C Self Serve
 Troy's Wood Specialties
 Video Plus - Dell Rapids
 Tracy Welbig
 Wells Fargo Bank, N.A.

HURON

A&B Business Solutions
 American Bank & Trust
 American Trust Insurance
 Avail Wealth Management, LLC
 Bank of the West
 Banner Engineering Corp.- Huron
 Barti Metal
 Louise Bauman
 Jim Borszich
 Brian J. Davidson Insurance Agency,
 Inc.
 BW Insurance Agency, Inc.
 Coborn's
 Countryside Dental
 Creative Printing
 Curt's Heating & Cooling
 Dakota Energy Cooperative, Inc.
 Dakota Family Dentistry
 Dakota Provisions
 Dakotaland Federal Credit Union
 East River Nursery
 Edney Distributing
 Farmers Union Service Association
 First National Bank South Dakota -
 Huron
 First PREMIER Bank/PREMIER
 Bankcard
 Fuchs Orthodontics
 Hangar Restaurant
 Danny Hofer
 Hohm Farms & Supply, Inc
 Huron Lioness Club
 Huron Luxury Cinemas

Huron Noon Lions Club
 Huron Regional Medical Center
 Huron Title Company
 Iverson Motor
 James Valley Veterinary Clinic
 Kiwanis Club of Huron
 Kuhler Funeral Home
 Landstrom Photo Loft
 Lewis Drug Stores
 Jill Luque
 Meyer Modernizing
 Midcontinent Communications
 Muth Electric
 NorthWestern Energy
 DK Osier
 Overbuilt, Inc.
 PB Sports Screen Printing &
 Embroidery
 Picek Construction
 Pierce & Harris Engineering
 Potter's Quality Footwear
 Premier Equipment
 Prostrollo Motor Sales, Inc.
 Rainbow Flower Shop
 Sanford Health
 Schoenhard Ford
 Sertoma Club - Huron (Noon)
 Skyways Travel
 Bryan Smith
 Lisa Snedeker
 Snow, Huether & Coyle
 South Dakota Farm Bureau Federation
 South Dakota Farmers Union
 The Clothing Company
 The New Plains
 Trussbilt, Inc.
 Tschetter & Hohm Clinic, P.C.
 Walmart
 Wells Fargo Bank, N.A.
 Wheeler, Erickson, Wheeler, LLP
 Wiedenman Construction

LENNOX

Billion Automotive
 Home Federal Bank
 Koyker Manufacturing/Sioux Steel
 Company
 Lennox Area Community Fund





Lewis Drug Stores
Sanford Health
Valley Exchange Bank

MADISON

AmericInn Lodge & Suites
Assist Financial Services, Inc.
B & G Transportation, Inc.
Be Online, Inc.
Sue Bergheim
Central Business Supply
Classic Corner
Continental Transportation
CU Mortgage Direct
Custom Touch Homes
Dairy Queen - Jode, Inc.
Dakota Ethanol, LLC
Dakota State University
Dakotaland Federal Credit Union
Dr. Derrill Hanson's Office
East River Electric Power Coop
East River Federal Credit Union
Exit Realty Advantage
Eyecare Center
F & M Coop Oil Co.
Falcon Plastics, Inc.
Farm Bureau Financial
First Bank & Trust
Getting Well Chiropractic
Global Polymer Industries
Great Western Bank
Julie Gross
GSN Insurance
Heartland Consumers Power District
Heritage Senior Living
Linda Hilde
HJN Team Real Estate
Ann Hyland
Innovative Housing Solutions
James River Equipment
Jason Maxwell, CPA
Jencks & Jencks, P.C.
Mechelle Johnson
Johnson Jewelers, Inc.
Keppen Construction

Kiwanis Club of Madison
Cotton Koch
Kolorworks Paint & Decorating, Inc.
Kotten Insurance
Krug Products, Inc.
Stacy Krusemark
Kundert Williams Insurance
Lake County International
Lake Veterinary Clinic
Lakeview Realty
Landeem Insurance
Larry Green, DDS Dental Office
Leader Printing Company/Madison
Daily Leader
Lewis Drug Stores
Madison Arbor Care, Inc.
Madison Chiropractic Center
Madison Community Hospital
Madison Elementary School
Madison Family Dental
Madison Farmers Elevator Company
Madison Lawn Care
Madison Lions Club
Madison Livestock Sales, Inc.
Madison Middle School
Madison Realty, Inc.
Madison Vision Clinic
Manitou Group
Midcontinent Communications
Midwest Realty
Joel Molascon
Montgomery's Furniture Outlet
Mustang Seeds
Nicky's Restaurant and Lounge
NorthWestern Energy
One Stop
Outer World Screen Printing & Design
Power Promotions
PPD USA Inc.
ProBuild
Prostrollo Motor Company
Rotary Club of Madison
Bob Sahr
Sanford Health
Vince Schaefer

Scott Schlisner
Second Street Diner
Shopko Foundation
Clark Sinclair
Sioux Valley Energy
SODAK's Marina LLC
South Dakota Rural Water
Stadium Sports Grill
Stan's Men's & Women's Apparel
State Farm Insurance - Randy Schaefer
Sunshine Foods
The Insurance Market
The Shepherd Shop
Rob Thuringer
Janet VanRosendale
Waddell & Reed
We Care Dental
Weber Abstract
Weiland Funeral Chapel
Wells Fargo Bank, N.A.
Wireless World
Wire's Tax & Management Services

MILBANK

1st Choice Realty
Ameriprise Financial, Inc.
Kristen Ash
Avera
Banner Associates, Inc.
Berens Warehouse Groceries
Lance Bien
Bien Pharmacy
Bill's Super Valu
Bryan Johnson, DDS
Casey's General Store
Conroy Eye Care
Dakota Granite Company
Edward Jones
Edward Jones - Delvin Hackwith
First Bank & Trust
Richard Fish
Food-N-Fuel
Gene Kiefer PA
George B. Boos Law Office
Gesswein Motors
Golden Living Center
Max and Jeanne Gonzenbach
Tim Graf
Great Western Bank
Hanson Furniture
Bob Hartman
Health First Chiropractic
Dave Hepper
Insurance Solutions Plus
ITC - Milbank
Kirby Hins LTD
Koch Insurance
Kevin Kouba
Lantern Inn Restaurant
Lantern Motel
Tim Lease
Lewis Drug Stores
Mark Bierschbach, DDS
Midcontinent Communications
Midwest Power Sports
Milbank Community Pride

Milbank EyeCare Center
Milbank Ford & Mercury
Milbank House Movers
Milbank Kiwanis Club
Milbank Parents Promoting Education
Milbank School District
Millstone Restaurant
Mundwiler Funeral Home
Rudy and Marilyn Nef
Nelson Law Office
OtterTail Power
Bob Paulson
Pizza Hut
Pizza Ranch
POET Biorefinery
Mark Reedstrom
RJ Rieger
S&D One Stop
Brian and Janel Sandvig
Tom Schuneman
Schuneman Equipment Company
Seehafer Hardware
St. Williams Nursing Home
State Farm Insurance - Jan Scriver
Street Graphix
Taco John's
Titan Machinery
Twin Valley Tire
Unzen Motors
Valley Queen Cheese Factory, Inc.
Wapiti Medical Group
Ryan Waterfall
Wells Fargo Bank, N.A.
Steve Wenzl
West-Con
ZEMS Appliance TV Furniture & Floor Covering

MITCHELL

A&B Business Solutions
Adam Financial Services
Avera
BankWest of Mitchell
Bauer Dental Studio
Bittner Funeral Chapel
Boyd Financial Services
BT Construction
C & B Operations
Cabela's Retail, Inc.
Carlton and Millar
CARQUEST of Mitchell
Central Electric Cooperative, Inc.
Cherrybees Floral & Gifts
Coborn's, Inc.
Coca-Cola Bottling Co.
Comfort Inn
Corby Recreation
Corn Palace Stampede, Inc.
County Fair Food Store
Culver's Frozen Custard & ButterBurgers
Days Inn
Dental Care Center, Prof., LLC
Dice Financial Services Group
Envision Eyecare

Lori Essig
 Ethan Co-op Lumber
 Exchange Club of Mitchell
 Farm Credit Services of America
 Farmers Trading
 First Dakota National Bank
 First National Bank South Dakota - Mitchell
 Fischer, Rounds & Assoc. - Insurance & Real Estate
 Floor to Ceiling Store
 Fuchs Orthodontics
 Jeral Gross
 H & R Salvage
 Hair Depot
 Hard Drive Central
 Lacey Hayes
 Hendrickson Trailer
 Home Federal Bank
 Huron Luxury Cinemas
 Innovative Systems, LLC
 Iverson Chrysler Center
 Jack's Campers
 Jacquelyn Johnson
 Jen Johnston
 Kiwanis Club of Mitchell
 KMIT/KOOL 98 Radio
 KQRN/Q107 Riverfront Broadcasting
 Krall Optometric Professional, LLC
 Lewis Drug Stores
 Lucid
 Megan Luther
 Luxury 5 Cinema - Mitchell
 Dennis Martin
 Martin-Trudeau Insurance Agency
 McLeod's Printing and Office Supply
 Midcontinent Communications
 Mitchell Area Charitable Foundation
 Mitchell Lions Club
 Mitchell Optimist Club
 Mitchell Telecom
 Montgomery Furniture
 Morgan Theeler LLP
 Mueller Lumber Company
 Muth Electric
 Muth Properties
 NorthWestern Energy
 Paulson Sheet Metal, Inc.
 Terra Plamp
 Puetz Corporation
 Ranek Ag
 Reginald Martin Agency
 Becky Roth
 S & M Printing Company
 Sanford Health
 Rob Schelske
 Schuh Painting
 Scott Supply Company, Inc.
 Shopko Foundation
 Suzanne Spink
 SPN & Associates
 Stifel Nicolaus
 James D. Taylor
 Tessier's, Inc.
 The Depot
 The Title Company
 Fredel Thomas

Thomsen Enterprises
 Tobin's Transfer and Storage
 Trail King Industries, Inc.
 Twin City Fan Axial Division
 U.S. Bank
 Julie VanOverschelde
 Vantage Point Solutions
 Vern Eide - Ford
 Vern Eide - GM
 Vicki Clarke Endowment
 Village Bowl
 Walmart
 Wells Fargo Bank, N.A.
 Rebecca Zabel

MOBRIDGE

Dacotah Bank
 Great Western Bank
 Midcontinent Communications
 Wells Fargo Bank, N.A.

NORTHERN HILLS

A&B Business Solutions
 Amann and Graslie DDS PC
 American Colloid Company
 American Family Insurance
 Barker Wilson Law Firm, LLP
 Belle Fourche Northern Lights Lions Club
 Bennett, Main and Gubbrud, PC
 Steve Biehl
 Black Hills Federal Credit Union
 Molly Blair
 Cammack Ranch Supply
 Chainsaw Center
 CLC & Assoc. CPA
 Crow Peak Brewing
 Dana Dental Arts
 David Donat, CFP
 Deadwood Eyecare
 Deadwood Lead Optimist
 Deadwood Lodge #508 BPOE
 Duke Boston Agency
 E.T. Sports
 F. L. Clarkson Family Foundation and Pioneer Bank & Trust, Spearfish
 First Interstate BancSystem Foundation
 First Interstate Bank - Belle Fourche
 First Interstate Bank - Lead
 First Interstate Bank - Spearfish
 First Interstate Greater Belle Fourche Fund
 First National Bank - Sturgis
 First Western Insurance
 Francis and Walter Green Foundation
 Jodi Garcia
 Glass Shop
 GoldCorp
 Golden Kiwanis
 Great Western Bank
 Hauck Electric & Controls, Inc.
 Highmark Federal Credit Union
 Sharon Hoggatt
 Homesource
 Independent Auto
 Jackson Dental Clinic

Kiwanis Club of Lead
 Melissa Kraft
 Lantis Enterprises
 Lead-Deadwood Elementary PTO
 Lead-Deadwood Elementary School
 Lead-Deadwood School District - Elem. Student Council
 Dan Leikvold
 Lynn's Dakotamart - Belle Fourche
 Lynn's Dakotamart - Lead
 Lynn's Dakotamart - Sturgis
 McGas Propane
 Meade County Title Company
 Midcontinent Communications
 Morris Law Firm, Prof. LLC
 Northern Black Hills Rotary Club
 Northern Hills Federal Credit Union
 Optimist Club of Sturgis
 Perkins Restaurant
 David Peters
 Pete's Clothing/Western Wear
 Pioneer Bank & Trust - Belle Fourche
 Pioneer Bank & Trust - Sturgis
 PL Carpentry
 Prestige Auto Sales
 Mathew Raba
 Ring Container Technology
 Chris Roberts
 Brice Rock
 Brenda Sabers
 Sabers Farmers Union Insurance
 Dr. Kay Schallenkamp
 Scott Peterson Motors
 Sharon E. Hoggatt, CPA, PC
 Shopko Foundation
 Linda Sperlin
 Sturgis Economic Development Corporation
 Sturgis Rally Charities Foundation
 The Homeslice Group
 The Real Estate Center of Belle Fourche
 Walgreens
 Walmart
 Wells Fargo Bank, N.A.

West River Foundation
 White's Canyon Motors
 White's Queen City Motors
 Mindy Zacher
 Zonta Club of Sturgis

PARKER

Farmers State Bank
 Home Federal Bank
 Parker Lumber Company
 Sanford Health
 State Farm Insurance - Freeman

PIERRE/FT. PIERRE

A&B Business Solutions
 American Bank & Trust
 Avera
 BankWest
 Janice Bartels
 Black Hills Federal Credit Union
 Bill Blauert
 Brakke Financial Services
 Scott Carbonneau
 Clausen & Rice, LLP
 Coca-Cola Bottling Co.
 Country Carpet
 Clay Cudmore
 Dakota Prairie Bank
 Delta Dental of South Dakota
 Dentistry at the St. Charles, LLC
 Dougherty & Company, LLC
 Curt Everson
 Kristie and Tim Fiegen
 Fine Line Auto
 First National Bank
 Fischer Rounds & Associates, Inc.
 Foster Rentals
 Gary Snow & Associates
 Hofer Seeds
 Home Federal Bank
 Janice Ingstad
 James River Broadcasting
 Macy and Mike Kaiser
 Kiwanis Club of Pierre-Ft. Pierre
 Paul Knecht





Lee McCurrin Construction Inc.
 Leisure Palace Pools & Spas
 Colleen and Lee McCurrin
 Midcontinent Communications
 Midwest Construction and
 Development
 Missouri River Dentistry
 Olinger, Lovald, McCahren & Reimers,
 P.C.
 Personal Group Inc.
 Pierre New Car Auto Dealers
 Association
 Pierre/Ft. Pierre Community
 Foundation
 Pierre/Ft. Pierre Rotary Club
 Elling Ramsey
 Reinke Gray Wealth Management, Inc.
 Taya Runyan
 Sanford Health
 Schmitz Financial
 Smart Software Solutions, Inc.
 Sarah Snyder
 South Dakota Community Foundation
 South Dakota Intrastate Pipeline
 Company
 Stulken Petersen, Lingle & Walti, LLP
 Tina Van Camp
 VDV, LLC.
 Wegner Auto Company, Inc.
 Emily Zarecky
 Zonta Club of Pierre-Ft. Pierre

RAPID CITY

A&B Business Solutions
 Ace Steel & Recycling, Inc.
 BankWest
 Barbara Lien Endowment
 Bierschbach Equipment and Supply
 Big D Oil Company
 Billion Automotive
 Black Hills Agency
 Black Hills Community Bank
 Black Hills Federal Credit Union
 Black Hills Harley-Davidson
 Black Hills Power
 Black Hills Regional Eye Institute

Black Hills Shooters Supply, Inc.
 Black Hills Surgical Hospital
 Shannon Brinker
 Michelle Bruno
 Kelly Buntrock
 Canyon Lake Resort
 Casey Peterson & Associates, LTD.
 Craig Christianson
 Contractors Supply
 Dacotah Bank
 Cary Davis
 Derby Advertising Inc.
 Downtown Lions Club
 Farm Credit Services of America
 First American Title Company
 First Interstate BancSystem
 Foundation
 First Interstate Bank
 Suzanne Gabrielson
 GE Foundation
 Golden West Technologies
 Grandview PTA
 Great Western Bank
 Gunderson, Palmer, Nelson &
 Ashmore, LLP
 Sarah Hermsen
 Ron Hill
 Kevin Jensen
 Kevin Maher
 McDonald's
 Sandi Mickley
 Midcontinent Communications
 Dr. Tim Mitchell
 Nooney & Solay, LLP
 Northwest Pipe Fittings
 Omni Home Financing
 Pennington Title Company
 Pete Lien and Sons, Inc.
 Pioneer Bank & Trust
 Don Policky
 Rapid City Area Chamber of
 Commerce
 Rapid City Catholic School System
 Rapid City Journal
 Rapid City Medical Center, LLP
 Rapid City Regional Hospital/

Regional Health
 Rapid City Rush Hockey Club
 Rapid Valley Elementary PTA
 Tom Rau
 REMAX of Rapid City
 Reptile Gardens
 RPM & Associates
 Rush Foundation
 Rushmore Plaza Holiday Inn
 Security First Bank
 Servall Uniform & Linen Supply
 Shopko Foundation
 South Canyon Elementary PTA
 South Park PTA
 Synchrony Financial
 U.S. Bank
 Walmart
 Wells Fargo Bank, N.A.
 Western Dakota Insurors
 Whiting, Hagg, Hagg, Dorsey and
 Hagg LLP
 Kevin Wolfe
 Woodrow Wilson PTA
 Jaci Worth

SIoux FALLS

Lead Investor:



A-1 Bail Bonds
 Active Data Systems
 ADP
 Ad-Star Sales, Inc.
 Advana Mortgage
 Agan Drywall Supply, Inc.
 Bill Allen
 Alphagraphics
 Paul Amundson
 Jamie Andersen
 Anderson Group, CPA
 Animal Medical Clinic
 Architectural Roofing & Sheetmetal,
 Inc.
 Architecture, Inc.
 Argus Leader
 Associated Consulting Engineers,
 Inc.
 Austad's Golf
 Auto Body Specialties
 AvailAbility Employment Services
 Avera
 AWE Financial Services
 David Bangasser
 Stephen Bianchi
 Bierschbach Equipment and Supply
 Billion Automotive
 Bluestem Capital Company
 Tom Bosch
 Boyce Law Firm, LLP
 Brandt Solomon & Anderson, LLP
 BTC Trust Company of SD
 Dean Buckneberg
 Builders Supply Company
 Burns Moving and Storage
 C & R Supply

Cadwell, Sanford, Deibert & Garry
 Capital One Financial Corporation
 CAPITAL Services
 Rod Carlson
 Century Business Products, Inc.
 CenturyLink
 Christopherson, Anderson, Paulson, &
 Fideler LLP
 Citi Foundation
 Climate Systems, Inc.
 CNA Surety
 Component Manufacturing Company
 CO-OP Architecture
 Costello Property Management
 Creative Surfaces, Inc.
 CU Mortgage Direct
 Cummins Central Power
 Cutler Law Firm, LLP
 D W Proehl Construction
 Dakota Land Homes
 Dakota News, Inc.
 Dakota Sports
 Daktronics, Inc.
 Davenport, Evans, Hurwitz & Smith,
 LLP
 Bernie DeWald
 Ditch Witch of South Dakota, Inc.
 Dizco, Inc.
 DocuTAP
 Dan Donohue
 Dorsey & Whitney Trust Company,
 LLC
 Dunham Company - Commercial
 Dunham Company - Residential
 Karen Durand - In Honor of Andrew
 and Ashley Tople
 Eide Bailly, LLP
 Electric Pulp
 Electronic Systems, Inc.
 Envive Chiropractic
 Ernst Capital Group
 esurance
 Fair Tax, Inc.
 Family Dental Center
 Farmers Insurance Group/Karsky
 Agency
 Kristie and Tim Fiegen
 Resa Fincher
 First Bank & Trust
 First Century Federal Credit Union
 First Dakota National Bank
 First Dakota Title
 First PREMIER Bank/PREMIER
 Bankcard
 FM Acoustical Tile, Inc.
 Formatop Company, Inc.
 Fred the Fixer
 Fresh Produce
 Friessen Construction
 Furniture Mart USA, Inc.
 G&H Distributing, Inc.
 Gage Brothers Concrete Products
 Luke Garry
 Jami Gates
 Geotek Engineering and Testing
 Services, Inc.
 Gerry and Kulm Ask

Getty Abstract & Midwest Title
Girton-Adams Ice Company
Golden Rule Construction Company, Inc.
Graham Tire
Grainger
Great Western Bank
Halberstadt's Men's Clothiers
Hancock Concrete Products
Handy Man Home Remodeling
Deb and Monte Hanson
Ruth Harms
Harold's Photo Center
Harrisburg Eye Care
Hauge Associates
HiRoller Conveyor
Holmes Murphy and Associates, Inc.
Home Federal Bank
TJ Hora
Howalt-McDowell Insurance, Inc.
Howe, Inc.
Hy-Vee Food Store
Karen Muth In Memory of Wayne Muth
Independent Insurance Agents of Sioux Falls
Institutions Services, Inc.
Interstate Office Products, Inc.
J & L Harley-Davidson
Janklow Law Firm
Jans Corporation
JDS Industries, Inc.
John Morrell and Company
Johnstone Supply
Journey Group Companies
Kading, Kunstle & Goodhope
Michael Kedik
Steve Kirby
Kreisers, Inc.
Eric Krouse
Ruth Krystopolski
Al Kurtenbach
Land Title Guaranty Company
Landmark Aviation
Lawrence and Schiller, Inc.
Dr. Kevin Lein
Lemony, LLC
Lewis Drug Stores
Lift Pro Equipment Company, Inc.
Lindquist & Vennum PLLP
Felan Link
Lloyd Companies
Lockwood & Zahrbock Kool Law Office
Luxury Auto Mall of Sioux Falls
Lee Magnuson
Maguire Iron, Inc.
Mahlander's Appliance and Lighting
Joan Mahoney
Marco
McFarland Supply Company
McKinneyOlson Insurance
Judith Meierhenry
Meierhenry Sargent, LLP
Dr. Rick Melmer
Mickelson & Company, LLC
MidAmerican Energy

Midcontinent Communications
Millennium Recycling, Inc.
Miller Funeral Home, Inc.
Minervas
Minnwest Bank
Missile Muffler & Brake, Inc.
Montgomery's Furniture Gallery
Ron Moquist
Murphy, Goldammer, Prendergast, LLP
Rich Naser
Julie Nelson
Nelson & Nelson CPA, LLP
Jan Noble
Norberg Paints, Inc.
Nordica Warehouses, Inc.
Norman's Menswear
NorthWestern Corporation
Kristine O'Connell
O'Connor Company
OHARA, LLC
One American Bank
Overhead Door Company, Inc.
Parker Transfer and Storage
Pepsi-Cola Bottling Company
Pinnacle Wealth Management
Plains Commerce Bank
Mark Powell
Pride Neon, Inc.
Principal Financial Group
Dieter Proehl
Qualified Presort Service, LLC
Raven Industries
ReCom, Inc.
ReliaMax Lending Services LLC
Rentschler's, Inc.
Results Radio
Tim Reuer
Risk Administration Services
Kelli Rogotzke
Char Roth
RSArchitects
Runge Enterprises
Sammons Financial Group
Sanford Clinic Physicians Community Service Group
Sanford Health
Andrew Schartz
Scheels
Schock Companies
Schoeneman Lumber Company
Scott Lumber and Supply Company
SDN Communications
Sea Chiropractic
Security National Bank of South Dakota
Service First Federal Credit Union
Shipley's Launderers and Dry Cleaners
Shopko Foundation
Shortridge Company, Ltd.
Showplace Wood Products
James Siemens
SilverStone Group
Sioux Falls Area Chamber of Commerce
Sioux Falls Federal Credit Union
Sioux Falls Ford

Sioux Falls Kitchen & Bath
Sioux Falls Kiwanis South
Sioux Falls Rubber Stamp Works
Sioux Falls School District #49-5
Sioux Falls Shopping News
Sioux International
Sioux Merchant Patrol Security Services, Inc.
Sioux Nation Ag Center
Sioux Steel Company
Sisson Printing
Soukup Construction, Inc.
South Central Vet Clinic
Sprenger Midwest, Inc.
Lynette Stearns
Nancy Steedle
Sturdevant's Auto Parts
Sullivans, Inc.
Sun Enterprises
SVC-Family Practice Physicians Charitable Fund-Minnesota Ave
Sweetman Construction
Swenson Investments & Commodities
Syverson Tile, Inc.
Tallgrass Wealth Management
Tessier's, Inc.
The Benevity Community Impact Fund
The First National Bank in Sioux Falls
The Ramkota Companies, Inc.
Bob Thimjon
Thompson Law, PC
Pam Tiefertalher
Tomar, Ltd.
Trane
Tri-State Wholesale Flooring, Inc.
U.S. Bank
U.S. Bank Foundation
UBS Financial
Van Buskirk Company
Tom Van Wyhe
Vern Eide Motorcars, Inc.
Virg Christoffels & Company, Inc.
VistaComm
Voyage Federal Credit Union
Walmart
Wellmark Blue Cross Blue Shield of SD
Wells Fargo Advisors, LLC
Wells Fargo Bank, N.A.
Wells Fargo Wealth Management
Jim Wilcox
Williams Insurance Agency
Williamson Management Group
Garrett Wilson
Wilson Orthodontics
Wireless World
Wollman Insurance
Woltman Group
Greg Woods
Woods, Fuller, Shultz, and Smith, PC
Xcel Energy

TEA

Dakota Millwork
Degeest Steel Works
DSI Automotive Products
GF Electric

J & M Transmission Service
J & R Mechanical
John Lawler
Lewis Drug Stores
Midcontinent Communications
Milliron Granite & Quartz
Net Pistol
Pizza Ranch
Pyro City
RBS Sanitation, Inc.
Reliabank
RMS Roller Grinder
Sanford Health
Schoenhard's Custom Cabinetry
Schwartzle Construction
Sorlien Electric
Sunshine Foods
Tea Area Community Fund of the Sioux Falls Area Community Foundation
Tea Area Parent Teacher Organization
Tea Chiropractic & Rehabilitation
Tea Veterinary Clinic
Valley Exchange Bank

VERMILLION

Aaladin Industries, Inc.
Steve Amerine
Bank of the West
Casey's General Store
Coffee Cup Fuel Stop
Commerce Properties, LLC - Eastgate Plaza
CorInsurance
Craig K. Thompson Law Office
Don Dahlin
Dakota PC Warehouse
East River Storage, LLC
Eastgate Maytag Laundry
Jeff Eckhoff
First Bank & Trust
First Dakota National Bank
Fraternal Order of Eagles
Dr. Mark Froke
H&R Block, Inc.
Herren-Schempp Building Supply
Jerry's Chevrolet Buick GMC
Keith Joy
Kalins Indoor Comfort
Patricia A. Kozak
Larry Brady Enterprise
Layne's World
Leo's Sports Bar & Grill
Dennis and Brenda Martens
Masaba Inc.
Midcontinent Communications
Young Moore
Theodore Muenster
Jamie Neitzke
Plum Villa Apartments
Paul Preister
PrintSource
Richard Rasmussen
Lynn Roach
Royal Car Wash
Arthur Rusch
Sanford Health

South Dakota Department of Labor -
Vermillion Office
Summerset Acres LLC
Tri-State Insulation & Siding
University Plaza
University Rentals
Mel Ustad
Vermillion Chamber & Development
Comp
Vermillion Civic Council, Inc.
Vermillion Federal Credit Union
Vermillion Lions Club
Vermillion PTA
Vermillion Rotary Club
Walmart
Whimp's

WATERTOWN

A&B Business Solutions
Austin, Hinderaker, Hopper, Strait &
Benson, LLP
Carmen Bakken
Bendix Imaging, Inc.
BISCO
Ryan Boschee
Liz Christianson
Coca-Cola Bottling Co.
Codington-Clark Electric Coop, Inc.
Cowboy Country Stores
Crawford-Osthus Funeral Chapel, LLC
Culligan Water Conditioning
Custom Fabricators, Inc.
Dacotah Bank
Dakota Bodies, Inc.
Tammy Davis
Tammy DeLange
Charlie Ewalt
Family Dental Center - Dr. Ross
Schulte, Dr. Aimee Schulte &
Dr. Erika Zink
First Bank & Trust
First PREMIER Bank/PREMIER
Bankcard
Dave Fuchs
Glacial Lakes Energy, LLC
Gray Construction
Great Western Bank
Kip Hansen
Haugan Nelson Realty
Julie Hibbert
Hoftiezer Real Estate
Home Federal Bank
Jason Hutt
Hy-Vee Food Store
Investment Centers of America
KXLG Radio
Lake Area Technical Institute
Marquardt Electric, Inc.
Brenda McKee
McKeever's Full Line Vending
Midcontinent Communications
Midwest Medical Service, Inc.
Miller Electric Manufacturing
Montgomery's Furniture
Paul Moore
Office Peeps, Inc.
Tim Oviatt

Perkins Restaurant and Bakery
R & R Investments
Ramkota Companies
Real Estate Professionals
Redlinger Bros. Plumbing & Heating
Co.
Reliabank
RSH, LLC.
Sanford Health
Heidi Schooley
Schuneman Equipment Company
Sharp Automotive
Shopko Foundation
Team Electronics
Trav's Outfitter
Glen Vilhauer
Walmart
Watertown Box Corp.
Watertown Ford Chrysler
Watertown Jaycees
Watertown Optimist Club
Watertown Rotary Club
Wells Fargo Bank, N.A.
Williams Auto
Wurth Electronics Midcom Inc.
WW Tire Service, Inc.

WEST CENTRAL

A-1 Electric Plumbing Heat & Air
A-1 Portable Toilets
American Sports
Automatic Building Controls
B & A Computers
Vonnie Barnett
Emily Berg
Beth G Photography
Bubba's Digging & Lawn Service Inc.
Buss Accounting & Consulting PC
Central States Manufacturing, Inc.
Central Valley Golf Course
Copperhead Ag
Edward Jones
Eich Law Office
Electric Supply Company
First Manufacturing
Gillespie Small Engine
Golden West Telecommunications
James Gordon
Hartford Dental Clinic, P.C.
Hartford Farmers Elevator
Hartford Mini Storage
Hartford Veterinary Clinic
Home Federal Bank
I-90 Speedway
Ideker Construction
Imagination Station
Impact Auto Works
Key Real Estate
Kinzley Funeral Home
Kristi Leisinger
Lemke Fitness and Training LLC
Maras, Inc.
MEDICAP Pharmacy
Midcontinent Communications
Miller Funeral Home, Inc.
Momentum Lawn & Snow
Josh Mulder

Jennifer Munger
Oakleaf Auto Crushing, LLC
Oakleaf Auto Salvage
Omnitech, Inc.
Pizza Ranch
Pro Framing, Inc.
Puthoff Insurance Agency
RBS Sanitation
Reliabank
Sanford Health
Sioux Valley Energy
West Central PTA
Zacharias Construction
Bill Zortman

WINNER

BankWest
First Fidelity Bank/Fidelity Agency
Frontier Motors
Grossenburg Implement
Mason Funeral Home
Office Products Center
Rosebud Concrete
Sanford Health
Shopko
South Dakota Automobile Dealers
Association
Statewide Ag Insurance
The Insurance Center
Winner Health Mart
Winner Rotary Club

YANKTON

A&B Business Solutions
AAA Collections
Ace Hardware
Chuck Aman
Applied Engineering
Avera
Jon Baumann
B-Dazzled Downtown
Blackburn and Stevens, LLC
Client Services, Inc.
Conkling Distributing Company, Inc.
Crist Orthodontics - Yankton
Dayhuff Enterprises, Inc.
Den Herder Law Office
Ear, Nose & Throat Associates, P.C.
Edward Jones
Eisenbraun & Associates
Chad Ekroth
Fejfar Plumbing & Heating
First Chiropractic Center
First Dakota National Bank
First National Bank
Terra Fisher
Susie Frick
Kathie Gerstner
Ben Hanten
Tom Hausmann
Home Federal Bank
Hubbs Agency, Inc.
Hy-Vee Food Store
Wayne Ibarolle
Randy Johnson
Johnson, Miner, Marlow, Woodward &
Huff, Prof., LLC

Kelly Inn
Kennedy Pier Knoff Loftus LLP
Frani Kieffer
Kolberg-Pioneer, Inc.
Koletzky Implement, Inc.
Leader Concrete Construction, Inc.
Lewis & Clark Specialty Hospital
Lewis & Clark Voiture
Lewis and Clark Realty
Limestone, Inc.
M. R. Henderson & Co.
Don Marker
Mark's Machinery, Inc.
Midcontinent Communications
MT & RC Smith Insurance
NorthWestern Energy
Olson's Pest Technicians
Steve Pietila
Kathy Quinlivan
Pam Rezac
RJ Rieger
Riverside Auto Body, LLC
Roger's Family Pharmacy
S.M.A.R.T. Training
Sacred Heart Monastery
Sacred Heart PTA
Jamie Schaefer
Shur-co
Slowey Construction
South Dakota Magazine
Deb Specht
Sweet Dreams Anesthesia, Prof LLC
Teachout & Franklin, Prof., LLC
Tire Muffler Alignment
Topkote Inc.
Trinity Lutheran Church
TruXedo
Justin Wagner
Walmart
Welfl Construction Corporation
Wells Fargo Bank, N.A.
Western Office Plus
Willcockson Eye Associates, PC
Williams and Company
Wintz and Ray Funeral Home
Wireless World
Yaggie's, Inc.
Yankton Ag Services
Yankton Area Foundation
Yankton Kiwanis Club
Yankton Medical Clinic, P.C.
Yankton Morning Optimist Club
Yankton Rexall Drug
Yankton Rotary Club
Yankton Sertoma Club
Yankton Title Company

Disclaimer: The recognition extended to those listed in this report is a small way to thank our supporters for the difference they make in the lives of South Dakota students. We invested much effort to ensure that this investor listing is accurate and apologize if your name has been omitted or misspelled.

STATEMENT OF ACTIVITIES

Year Ended June 30, 2015

	UNRESTRICTED	TEMPORARILY RESTRICTED	PERMANENTLY RESTRICTED	TOTAL
REVENUE:				
Special Events				
Golf Revenues	\$-	\$166,288	\$-	\$166,288
Golf Expenses	-	(20,670)	-	(20,670)
Net Golf Revenues	-	145,618	-	145,618
Bowl-a-Thon Revenues	-	192,091	-	192,091
Bowl-a-Thon Expenses	-	(29,203)	-	(29,203)
Net Bowl-a-Thon Revenues	-	162,888	-	162,888
Net Special Events	-	308,506	-	308,506
Contribution Revenue:				
Corporations	66,756	439,411	-	506,167
Individuals	11,016	72,508	-	83,524
Foundations	5,052	33,256	-	38,308
Total Contribution Revenue:	82,824	545,175	-	627,999
Gifts In Kind Received - Advertising	411,558	-	-	411,558
Gifts in Kind Received - Product	51,763	-	-	51,763
Investment Income	29,839	2,672	2,506	35,017
Net Assets Released from Restriction	860,590	(860,590)	-	-
Total Revenue:	1,436,574	(4,237)	2,506	1,434,843

EXPENSES:				
Program Services				
Salaries and Benefits	486,572	-	-	486,572
National Program Materials, Insurance, and Participation Fee	214,731	-	-	214,731
Other Program Services	137,246	-	-	137,246
Program Services - Gifts in Kind Used	510	-	-	510
Total Program Services	839,059	-	-	839,059
Management and General	22,244	-	-	22,244
Management and General - Gifts in Kind Used	245,487	-	-	245,487
Fundraising	129,664	-	-	129,664
Fundraising - Gifts in Kind Used	217,324	-	-	217,324
Total Expenses	1,453,778	-	-	1,453,778
Operating Income (Loss)	(17,204)	(4,237)	2,506	(18,935)
Nonoperating Revenue				
Unrealized Gains (Losses) , nonoperating	16,217	1,717	-	17,934
Changes in Net Assets	(987)	(2,520)	2,506	(1,001)
Net Assets, Beginning	1,105,159	1,094,159	258,329	2,457,647
Net Assets, Ending	\$1,104,172	\$1,091,639	\$260,835	\$2,456,646

JA STUDENT NUMBERS



**Junior
Achievement®**
of South Dakota

STATE OFFICE

1000 N. West Avenue, Suite 110

Sioux Falls, SD 57104

Phone: (800) 871-7007 | (605) 336-7318

Fax: (605) 336-2257

Email: jasd@ja.org

Website: www.jasd.org

2014-2015	Classrooms	Students
Aberdeen	78	1,833
Belle Fourche	14	293
Brandon Valley	80	1,853
Brookings	100	2,213
Canton	20	368
Centerville	8	139
Chamberlain	5	107
Dell Rapids	35	740
Harrisburg	161	3,113
Huron	46	1,096
Lead/Deadwood	17	289
Lennox	16	353
Madison	28	568
Meade (Sturgis)	14	306
Milbank	37	708
Mitchell	58	1,216
Mobridge	2	39
Parker	6	170
Pierre/Ft. Pierre	52	1,124
Rapid City	177	4,177
Sioux Falls	1,015	23,324
Spearfish	23	549
Tea	37	763
Vermillion	29	684
Volga	17	362
Warner	4	96
Watertown	66	1,532
West Central	41	864
Winner	9	146
Yankton	49	988
SD TOTAL:	2,244	50,013

